



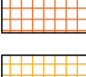



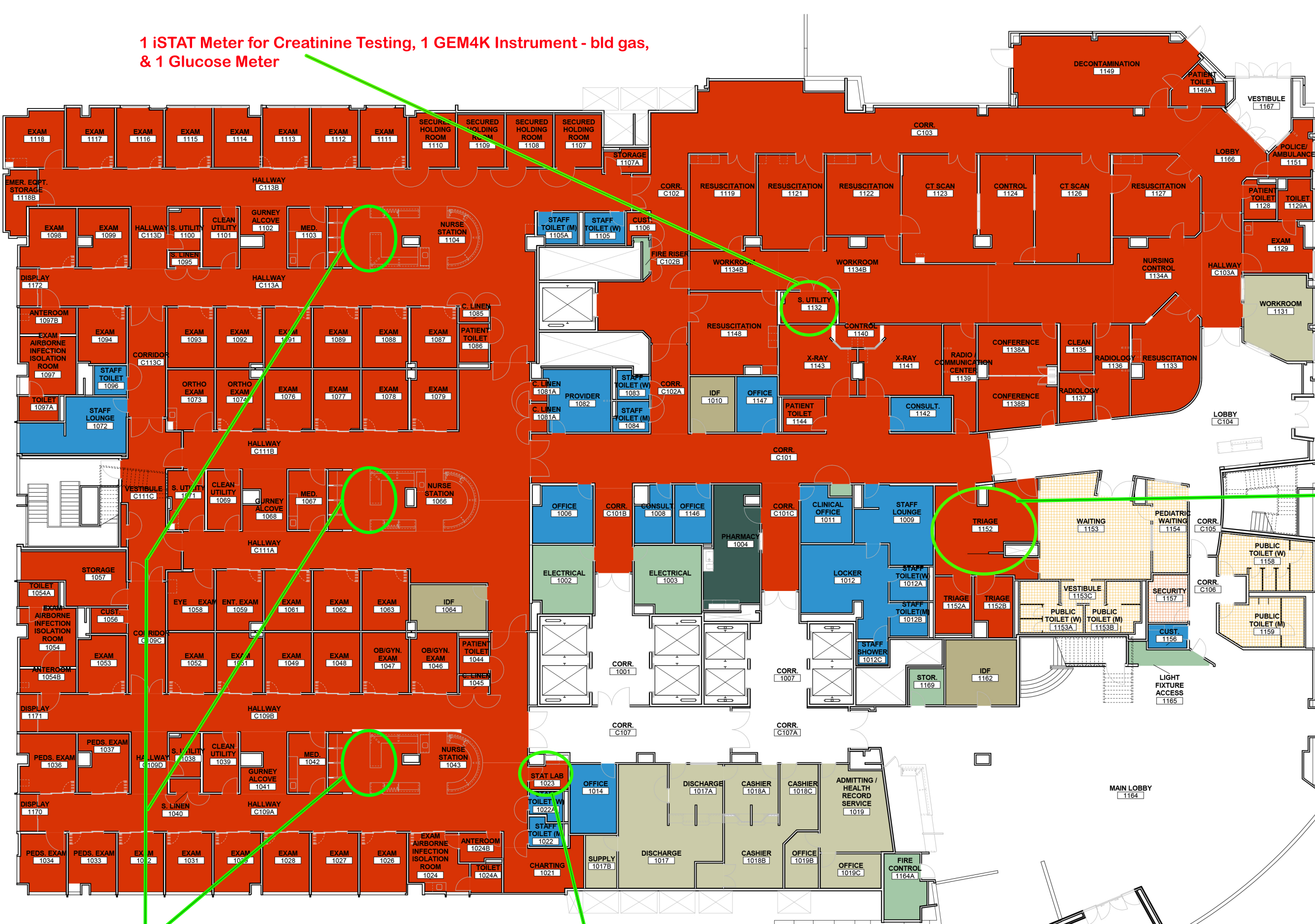


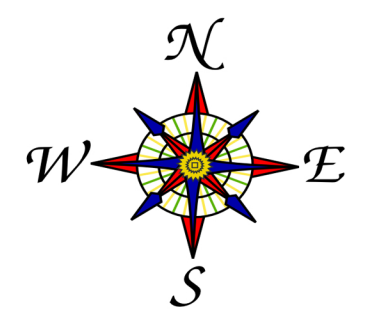
1 iSTAT Meter for Creatinine Testing, 1 GEM4K Instrument - bld gas, & 1 Glucose Meter

-  ADMITTING AND REGISTRATION / CASHIER
-  EMERGENCY DEPARTMENT
-  MECHANICAL / ELECTRICAL / PLANT SERVICES
-  PHARMACY
-  SECURITY
-  SHARED PUBLIC SPACE
-  STAFF
-  TELECOM / IT



1 Glucose Meter

Additional POCT on this floor: Urine Pregnancy, Fecal Occult Blood, & Vaginal Wet Mounts



POCT RELOCATION PLAN
Clay Hooper - April 3, 2015

APPROVED:
Dave Staconis - 4/9/15
Rachel Perry - 4/9/15
Jeff Schmidt - 4/9/15

2 Glucose Meters in each Pod (total = 6)

1 GEM4K Instrument - bld gas and 1 Microscope

FIRST FLOOR